



MODEL NUMBER

61047

## GM AIRBAG STEERING WHEEL REPLACEMENT PROCEDURES

Congratulations on the purchase of your new **GRANT REVOLUTION** steering wheel. This wheel is a direct replacement for your original factory steering wheel with spoke mounted control switches. The original airbag (SIR) module, horn switch, switch harness, switches and shroud from the factory wheel must be removed and transferred to the new **GRANT** wheel.

This wheel will fit the following vehicles:

Cadillac – 2007-on Escalade, Escalade EXT and Escalade ESV

Chevrolet/GMC – 2007-on Silverado/Sierra Pickups and Avalanche  
2007-on Suburban/Yukon XL  
2007-on Tahoe/Yukon and Denali  
2007-on Express/Savana Vans

Hummer – 2007-on H2

### **IMPORTANT - PLEASE READ**

These **GRANT** Instructions use the factory shop manual procedures for the removal and reinstallation of the steering wheel and airbag module. In addition the **GRANT** instructions include step-by- step procedures for the changeover of the switches, wiring and trim pieces from the factory wheel to the Grant wheel. Before proceeding with the replacement of your original steering wheel, it is necessary to read and understand all these instructions. By reading them first, you can become familiar with the steps and terminology used. Please take note of the following directives used throughout these instructions:

**ALWAYS      CAUTION      NEVER      NOTICE      NOTE**

**NOTICE** - **GRANT** recommends that installation be performed by a qualified service provider such as your local GM dealer, a certified mechanic, collision repair shop or a local airbag service center. Many of these service centers will come to your home or place of business to change out the air bag and wheel for a nominal fee. To find these providers check the internet for “airbag service”, “mobile airbag service” or check the yellow pages. If you decide on changing the wheel yourself or having someone who is not a certified mechanic perform the installation of your new **Grant** wheel, we offer an instructional video on our webpage. **GRANT** does not provide any express or implied warranty for the airbag, including any warranty of merchantability or fitness for a particular purpose. **GRANT** disclaims any liability arising from improper installation of the airbag, including any liability for injury or death.

### **CAUTION**

**ALWAYS** WEAR SAFETY GLASSES WHEN REPAIRING OR HANDLING AN AIR BAG.

**ALWAYS** CARRY A LIVE AIR BAG MODULE WITH THE TRIM COVER POINTED AWAY FROM YOUR BODY.

**ALWAYS** PLACE A LIVE AIR BAG MODULE ON A BENCH OR OTHER SURFACE WITH THE TRIM COVER FACING UP.

**NEVER** PROBE THE CONNECTORS ON THE AIR BAG MODULE.

AIR BAG MODULES WITH DISCOLORED OR DAMAGED COVERS OR DEPLOYMENT DOORS MUST BE REPLACED, NOT REPAINTED.

“VISIT OUR WEBSITE [WWW.GRANTPRODUCTS.COM](http://WWW.GRANTPRODUCTS.COM) AND DOWNLOAD INSTALLATION VIDEO”

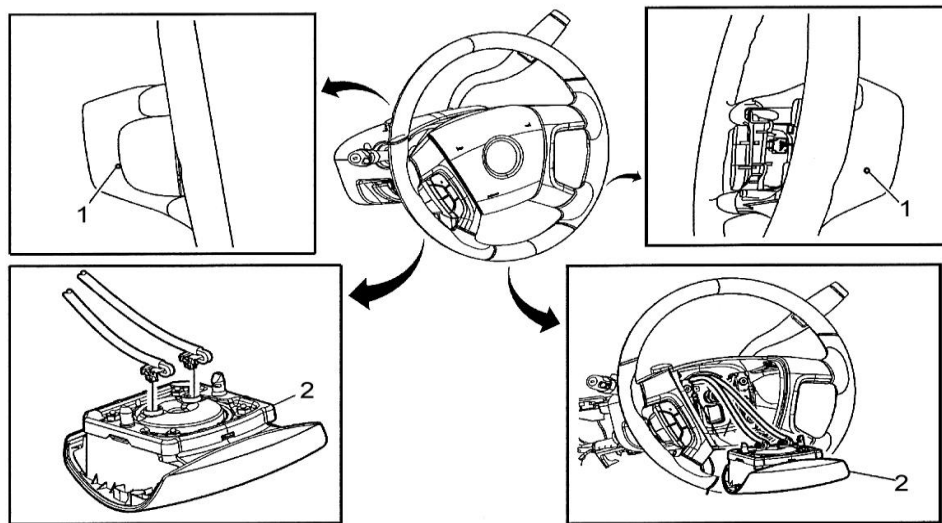
**Tools required:**

3-4mm Allen Wrench  
Socket Set  
Torque Wrench

T-15, T-20 and T-30 Torx Drivers  
Safety Glasses

**DISABLING AND REMOVAL OF THE AIRBAG MODULE**

1. Position the steering wheel so that it is pointed straight ahead. Write down all of your radio presets as these may be lost when you disconnect the battery cable.
2. **NOTICE** - Disconnect the negative battery cable and wait at least **1 full minute** for the circuit to completely discharge before proceeding. **CAUTION:** Failure to fully deplete the backup power supply could result in an accidental deployment and possible injury.
3. Using a 3-4mm (1/8"-5/32") Allen wrench release the 2 spring fasteners by pushing inward through the access holes. The access holes are located on both sides of the rear plastic steering wheel shroud. See number 1 in the illustration below.



4. Lift and partially remove the airbag module from the steering wheel in order to expose the electrical connectors on the back side. Take care not to pull on any of the wiring. See number 2 in illustration.
5. The airbag electrical connections have a safety locking connector-position assurance (CPA) clip that must be disconnected before you can remove the electrical connectors from the module.



6. Disconnect the electrical connectors from the airbag module.
7. Remove the airbag module from the steering wheel and place the module face up on the floor, seat or work bench. If you carry the module make sure the trim cover is pointed AWAY from your body.

**REMOVING THE STEERING WHEEL FROM THE VEHICLE**

1. Disconnect the wheel switch wiring harness at the column connector. **Do not pull excessively on the connector or clockspring mechanism and do not turn the clockspring now or at any time during the remainder of the installation.**
2. Loosen the steering wheel retainer nut until 2 or 3 threads are left engaged. Wiggle (rock) the steering wheel back and forth while pulling upward until it disengages from the shaft, and then remove the retainer nut and wheel from the vehicle.

3. Unplug the connector from the right side of the zinc plated horn mechanism (this connector usually has a pinkish colored insulator. Loosen the 4 #T-30 Torx screws holding this horn mechanism to the wheel. When the screws are loose lift this entire mechanism out of the wheel.
4. Remove the 4 small #T-15 Torx screws holding the copper horn contacts to the plastic trim and then separate the contacts from the trim piece.
5. If your wheel has switch(s) located on the side(s) of the wheel you will need to disconnect the harness at each switch. To do this you must first push the wires out of the small plastic retaining band located just below where the connector plugs into the switch. Just slide the wires out from under the band (it is open toward the top of the wheel) then push the release tab and pull the connector loose from the switch.
6. Remove the plastic trim components from each side of the wheel leaving the switch attached (if so equipped). Pull up on the outside (spoke) area where the plastic meets up with the rim of the wheel, just pull straight up and the trim will release, do one spoke at a time, you don't need to pull hard just apply steady pressure until you feel it release and then go the other spoke. Once both spokes are free just lift the assembly from the wheel. Repeat the procedure for the other side of the wheel.
7. Remove the 4 #T-30 Torx screws holding the rear shroud to the wheel frame. Once removed the entire shroud and wheel wiring harness will come off as a unit.

### **PREPARING NEW WHEEL FOR INSTALLATION**

1. Reinstall the rear shroud/wiring harness assembly to the new GRANT wheel. Make sure the wiring and copper horn contacts pass through and are above the metal frame of the wheel and then tighten the 4 screws securely.
2. Reinstall both of the plastic trim components/switch assemblies onto the wheel by aligning the hole molded into each spoke with the plastic tab on the back of the trim piece. Push straight down to lock into position. Make sure the wiring and the copper plate at the bottom of the wheel are free and don't get caught under the plastic.
3. Connect the wiring harness to the switches in the wheel (if so equipped) and then route the wires back under the small plastic band retainers.
4. Install the copper horn contacts back into their original positions and tighten their 4 retaining screws.
5. Position the zinc plated horn mechanism back into the wheel; make sure the horn wire connector doesn't get pinched under this part. Tighten the 4 Torx screws securely. Reconnect the horn lead to the tab on the right side of the bracket as before.

### **INSTALLING NEW STEERING WHEEL**

1. Position the new wheel onto the shaft making sure the airbag module wiring feeds through (there is only one way to install the wheel so you cannot get it on crooked).
2. Install the steering wheel retainer nut and torque to 41 N-m (30 lb ft).
3. Connect the wheel wiring harness to the clockspring mechanism in the column.
4. Position the airbag module near the wheel and connect the electrical connectors to the module.
5. Connect the connector-position assurance (CPA) clips into the electrical connectors. Seat and lock the connections.
6. Position the alignment posts of the airbag module to align with the holes that are located on the steering wheel housing.

7. Push the airbag module into the steering wheel to engage and latch the 2 spring fasteners. Once positioned pull up on the sides of the airbag module to ensure that both spring fasteners are fully engaged.
  
8. Reconnect the negative battery cable. **NOTE:** When the ignition switch is turned to the "ON" position the air bag indicator light should flash then turn off. If the light does not flash or remains on there is a problem with the connections that must be resolved. Refer to "Disabling and Removal of the SIR (Airbag) Module" instructions for removal and steps 4 and 5 above for connections of the air bag wiring.

Remember to reset your radio station presets and clock and enjoy your new **GRANT REVOLUTION** steering wheel. When you first start the vehicle the engine may run less smoothly than before as the computer will have to reset itself due to the power loss but this will just take a moment or two.

**If you need further assistance contact GRANT Technical Service Support at:**

**Phone (956) 542-0202**

**Phone (800) 952-6974**

**Email: [customerservice@grantproducts.com](mailto:customerservice@grantproducts.com)**

**Support Hours are 8:00AM to 5:00PM Central Time  
Monday through Friday**



**OUR LIMITED WARRANTY**

We warrant this product for ninety (90) days from the date of original purchase to be free from defects in materials and workmanship. If, during this period, the product fails under normal usage because of a manufacturing defect, then we will replace or repair the item. To obtain repair or replacement under the terms of this warranty, notify us at 615 Elca Lane, Suite E, Brownsville, TX 78521. Proof of purchase and date of purchase are required to validate warranty.

All implied warranties, including any warranty of merchantability or fitness for a particular purpose, are limited to this same ninety-day period from date of original purchase. We are not liable for any direct or consequential loss or property damage arising from any use of this product. This warranty gives you specific legal rights, and you may also have other rights which vary from state to state. Offer good in U.S.A. and Canada only.

**GRANT PRODUCTS INTERNATIONAL, INC.  
615 Elca Lane, Suite E  
Brownsville, TX 78521**

**On the Web: [www.grantproducts.com](http://www.grantproducts.com)**